

power-heat-set
GmbH

The perfect solution for every customer!

GVA 5.0+
The standard model

About us

Perfect carpet yarn

Power-Heat-Set: Perfect heatsetting equipment for the carpet industry

40 years of experience – more than 1,000 machines in the heatsetting market

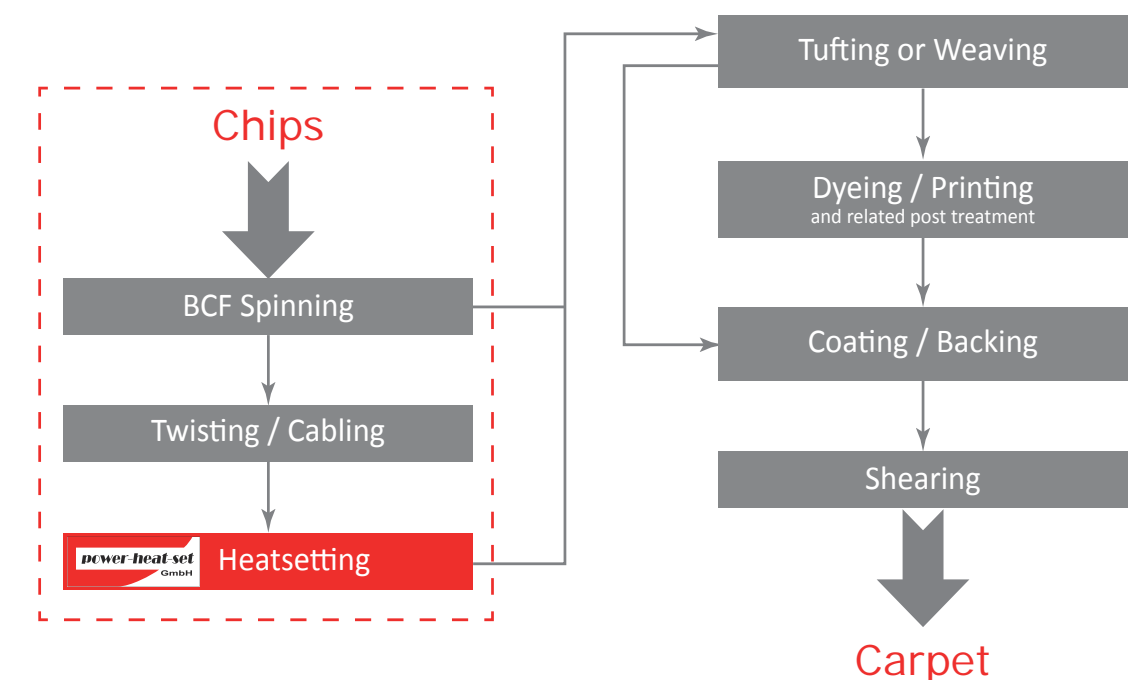
We have been supplying the carpet industry with machines and components for carpet yarn treatment for over 40 years. The different versions of our machines called GVA and HiPerSet, offer a wide variety of products and allow our customers to choose a machine that meets their needs.

Innovative technology and development - We shape what you need!

A team of skilled and experienced engineers develops and designs our heatsetting machines. Our R&D department focuses on bringing advantages to our customers and constantly improves on topics such as quality, runability, productivity, energy saving or handling.

Worldwide customer support with know-how and parts

All our equipment is manufactured by highly-qualified technicians at our German based headquarters in Toeing near Munich and a team of mechanics and technicians is available worldwide for set-ups and service. Our US subsidiary in Dalton and several sales agencies and representatives all over the world allow us to guarantee a quick response time.



GVA 5.0+

The standard model



Picture shows GVA 5000 / 2

GVA 5.0+ - The benefits at a glance

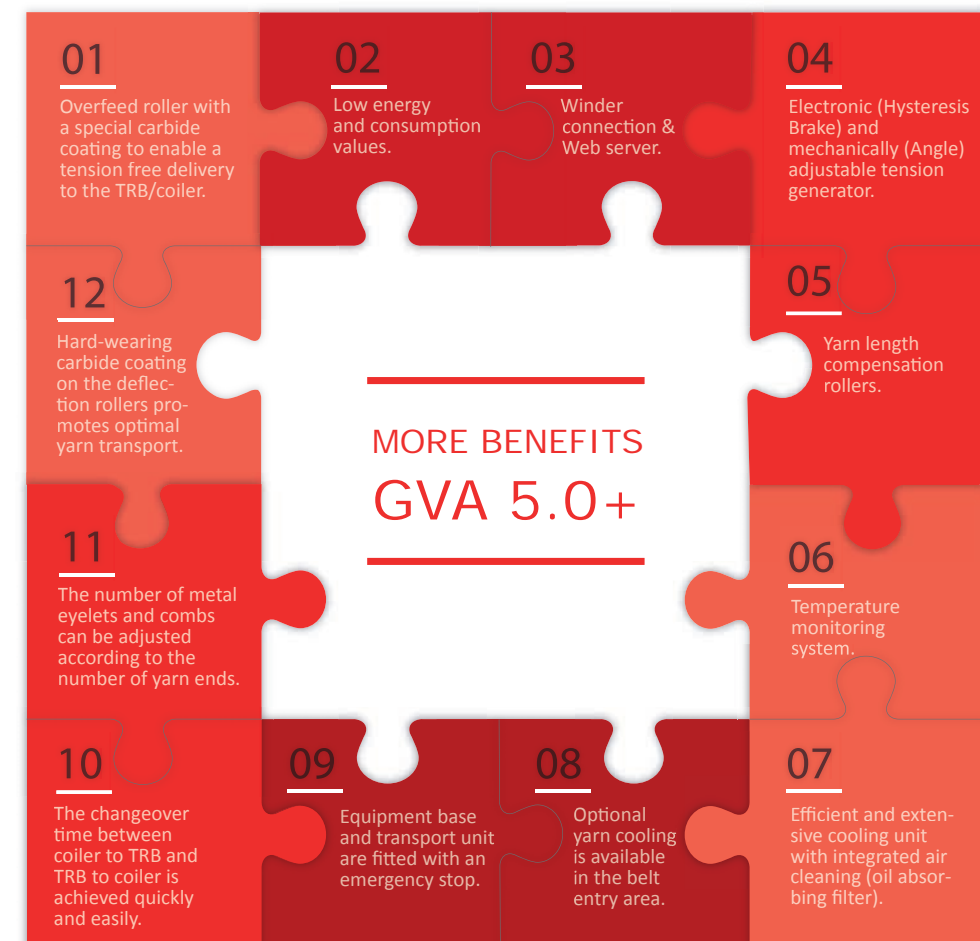
The GVA Heatsetting machine offers proven reliability, flexibility, and productivity in continuous heatsetting. It utilizes superheated steam with the full capacity of heatsetting natural or synthetic fibers.

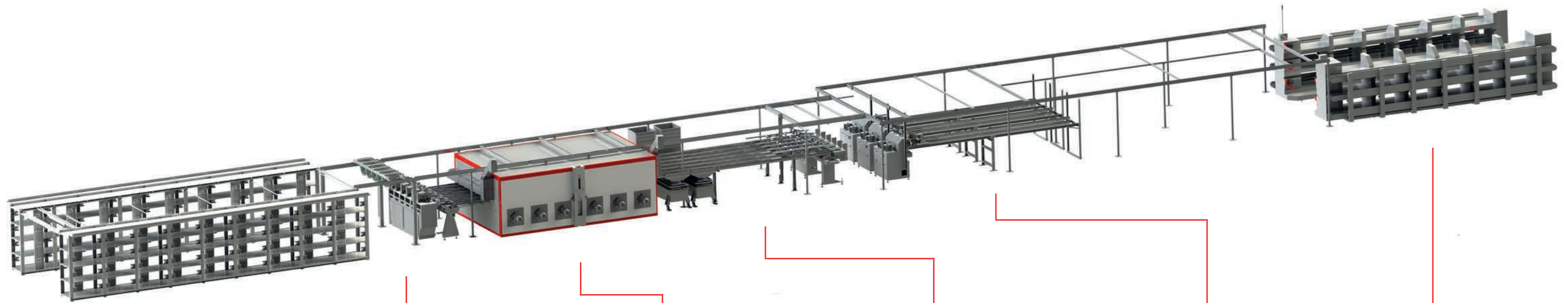
The 6 channel configuration provides unmatched versatility for the customer. The GVA essentially provides six machines in one energy efficient package. Not only is the GVA a perfect solution for running high volumes of uniform production efficiently, but the GVA also provides the flexibility to run six individual lot sizes whilst offering the ability to process frieze or straight yarn on any position.

For processing acrylic yarns, a special version of the machine using material with increased resistancy to corrosion is available on request.

GVA 5.0+ - The standard model

Decades of global experience combined with modern design and functionality. Production up to 12 tons per day.





Creel

- Optimal ergonomic design and easy handling
- Flexible choice of distance between creel yarn packages according to size: ergonomic 400mm or larger 500mm
- Locking system for mandrels ensuring safe bobbin positioning
- Thread sensor with Quick Stop in the event a yarn end should break
- Antistatic design
- Variable set-up options
- Equipped for all bobbin form
- Optional Extras:*
- Bobbin monitoring = Bobbin Monitoring Control (BMC) i.e. LED light tree indicates creel position status
- SpliceSet



TRB & Coiler

- Combined solution for straight set yarn and frieze
- Good accessibility
- Easy to operate
- Pneumatic pressing lever improves the consistency of frieze
- Special perforations in steam channel enable uniform perfusion of yarn
- Quick and easy change from frieze to straight yarn
- Wide variety of texture levels
- An air injector enables easy threading
- Coiler yarn deposit on the belt can be either a circle or a figure eight
- Protection against yarn jam through sensors



GKK

- Computer-controlled dew point regulation (steam control)
- Range of temperature for heatsetting between 110-200 °C
- Temperature monitoring on each heatsetting channel
- Energy saving design



Six channels

- Maximum flexibility
- Possibility to process different specifications (frieze, color, etc.) at one time
- High efficiency factor when yarn breaks occur (5/6ths of machine capacity keep on running)
- Quick yarn break removal
- Optimal yarn cooling



TwinAccu

- Quick and easy to thread
- Variable length of storage depending upon the modular design (3 m, 6 m, 9 m)
- Storage capacity is up to 45 minutes with 6 m
- Yarn tension is achieved with the help of the tension generator resulting in improved yarn separation over rollers, eliminating sliding friction and shiny spots
- Hard-wearing carbide coating on the deflection rollers promotes optimal yarn transport
- Smooth and continuous contact pressure
- Sliding rails with special high-tech coating
- Pneumatic pressing lever improves yarn transport



TakeUp Winder

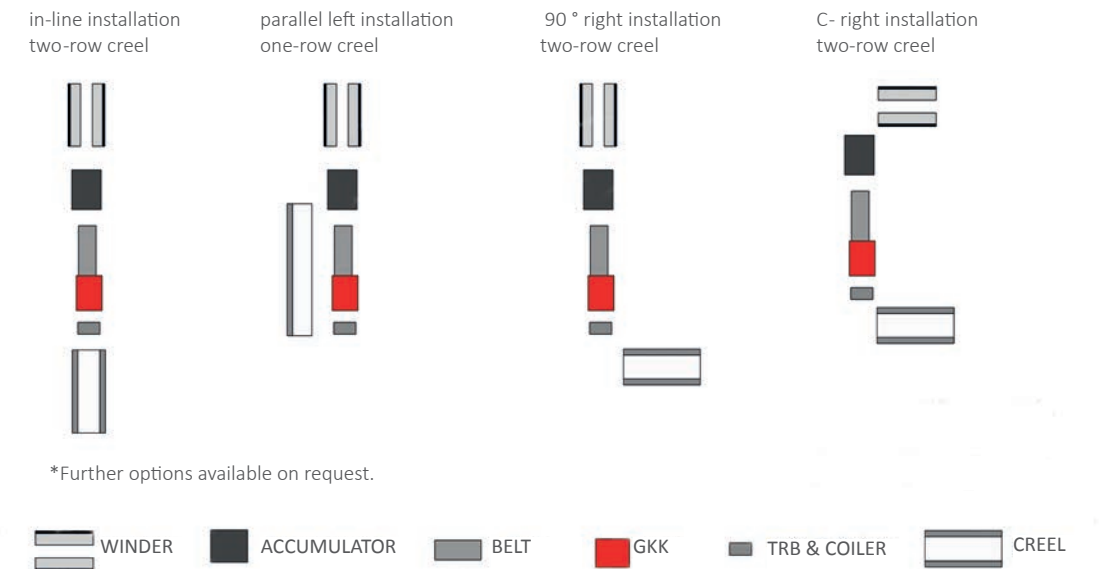
- Quick thread up and doffing (down to 25 sec.)
- Yarn speed up to 750m/min
- Accurate bobbin build-up



Technical data

Overview GVA 5.0+

Installation options



Technical data*

	GVA 5.0+
Number of operators (average)	2
Maximum ends on creel	96
Maximum yarn speed overfeed	600
Straight and frieze yarn possible	✓
Maximum production (tons/day)	11- 12
Channels with yarn relaxing zone	6
Accumulator for optimizing machine efficiency	✓
TakeUp winder maximum yarn speed (m/min)	750 m/min
Maximum belt density (g/m length of belt)	185
Steam consumption (kg/h)	50- 80
Electricity consumption (KWh)	60- 80
Air consumption (without TRB transport air)	1 Nm ³ /h

*All data without guarantee and excluding all liability. These are approximate values which can vary depending on conditions. Production data depending on dtex, twist, filaments, yarn quality, yarn speed, belt density, etc. The belts must not be loaded with more than the recommended quantity.

Service

Professional support

Customer support

We love to support you!

We are not only your machine and spare part supplier, but we are also your best source for technical support and service. Excelling in customer service is of the utmost importance to us.

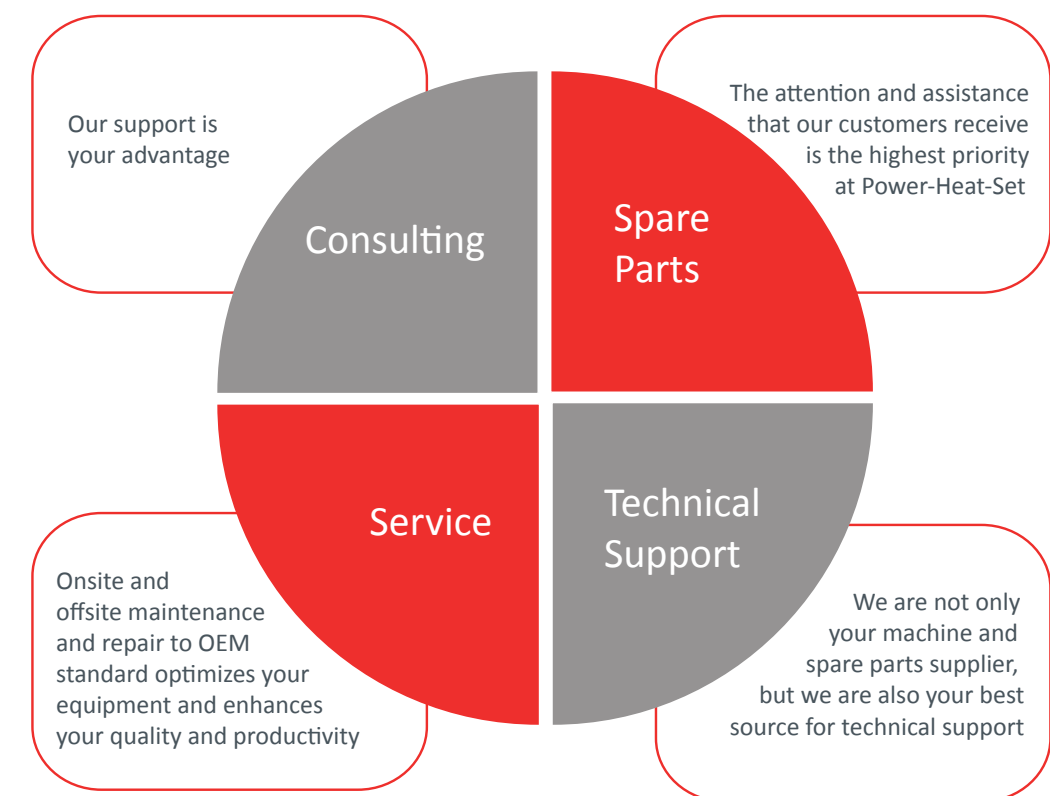
Parts and technical support

Installation, commissioning, training for staff, maintenance, supply of spare parts, technical advice, We have the expertise and experience. For example, we provide a training and R&D center where we process material trials for customers or offer training for operators.

Consulting for all matters

Consulting you on which of our products fits your needs, planning the machine layout, supporting you with financing models, Whatever you need, our worldwide operating team is happy to offer a comprehensive carefree package for our customers.

Let us know what we can do for you!





power-heat-set GmbH

Power-Heat-Set GmbH

Amperstrasse 4
84513 Toeging am Inn
GERMANY

Phone: +49 (0) 8631/393-480
Fax: +49 (0) 8631/393-580
E-Mail: mail@power-heat-set.com
Internet: www.power-heat-set.com



Power-Heat-Set of America, Inc.

409 North Park Drive
Suite D

Dalton, Georgia, 30720-2625

Phone: +1 (706) 5297199
Fax: +1 (706) 5297351
E-Mail: mail@power-heat-set.com
Internet: www.power-heat-set.com

