



***power-heat-set***  
**GmbH**

The perfect solution for every customer!

**HiPerSet 8.0+**  
The strongest single channel model



# About us

## Perfect carpet yarn

## Power-Heat-Set: Perfect heatsetting equipment for the carpet industry

### 40 years of experience – more than 1,000 machines in the heatsetting market

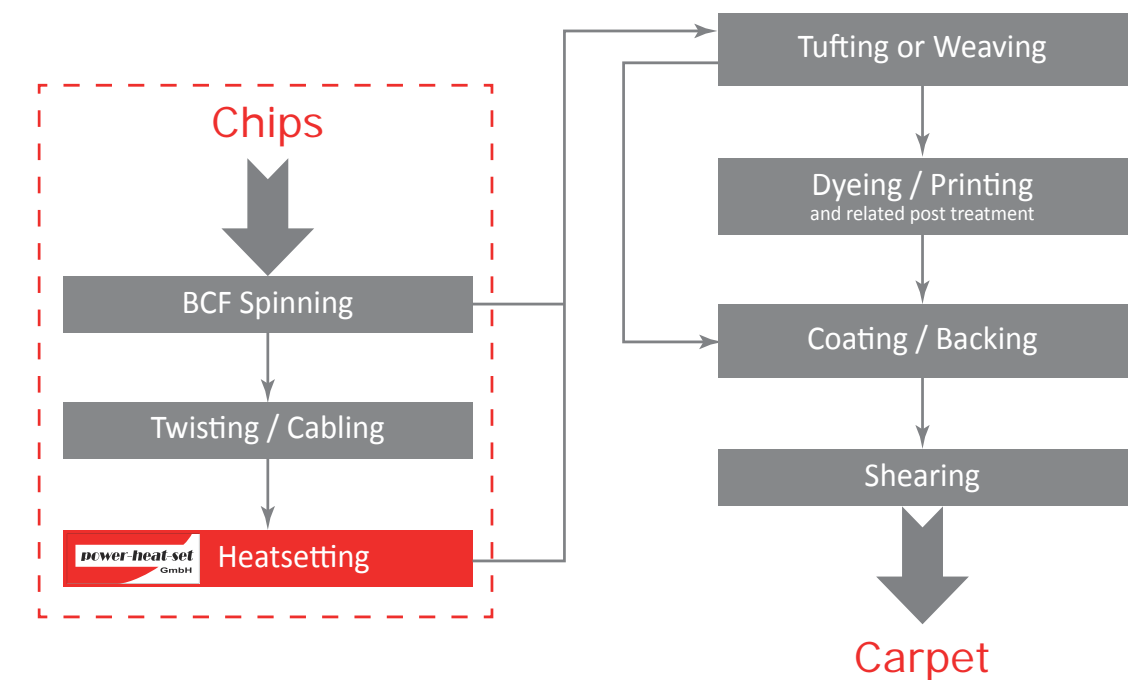
We have been supplying the carpet industry with machines and components for carpet yarn treatment for over 40 years. The different versions of our machines called GVA and HiPerSet, offer a wide variety of products and allow our customers to choose a machine that meets their needs.

### Innovative technology and development - We shape what you need!

A team of skilled and experienced engineers develops and designs our heatsetting machines. Our R&D department focuses on bringing advantages to our customers and constantly improves on topics such as quality, runability, productivity, energy saving or handling.

### Worldwide customer support with know-how and parts

All our equipment is manufactured by highly-qualified technicians at our German based headquarters in Toeing near Munich and a team of mechanics and technicians is available worldwide for set-ups and service. Our US subsidiary in Dalton and several sales agencies and representatives all over the world allow us to guarantee a quick response time.





# HiPerSet 8.0+

## The strongest single channel model

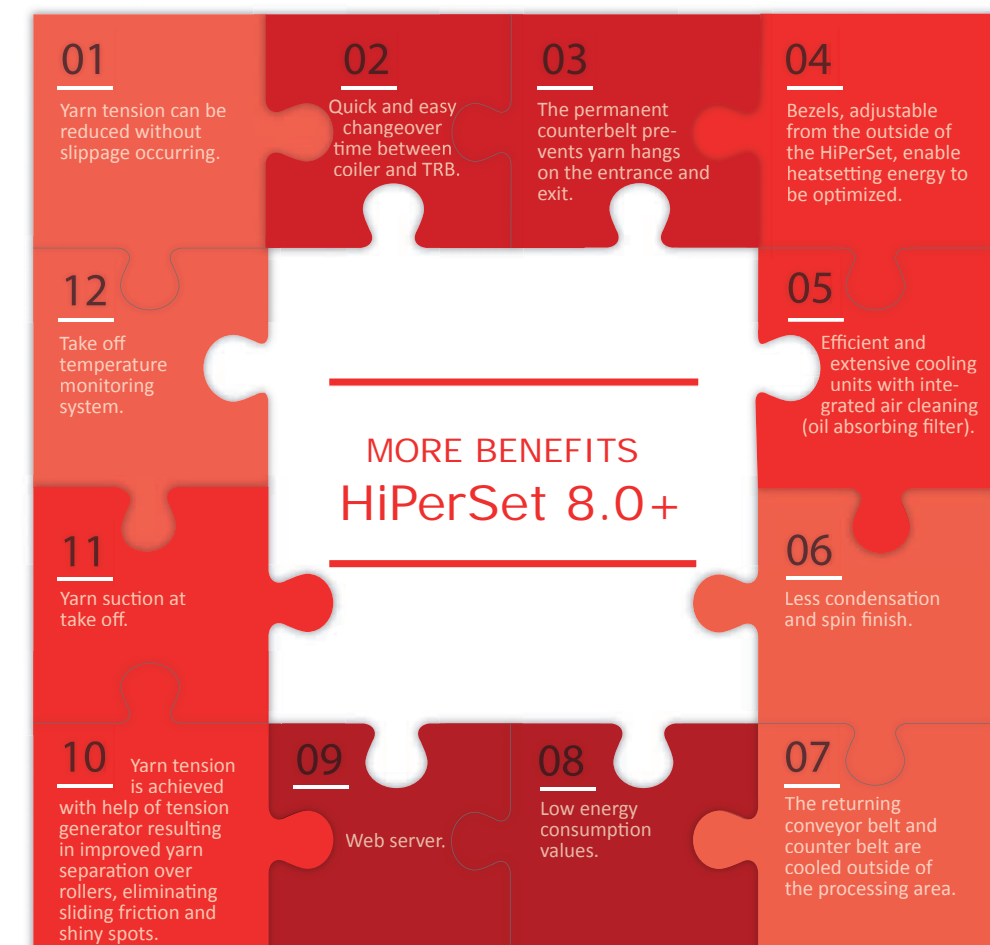
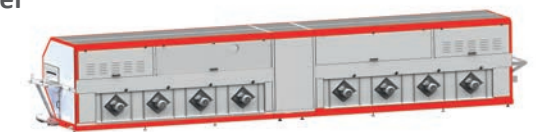
Picture shows a HiPerSet 2500

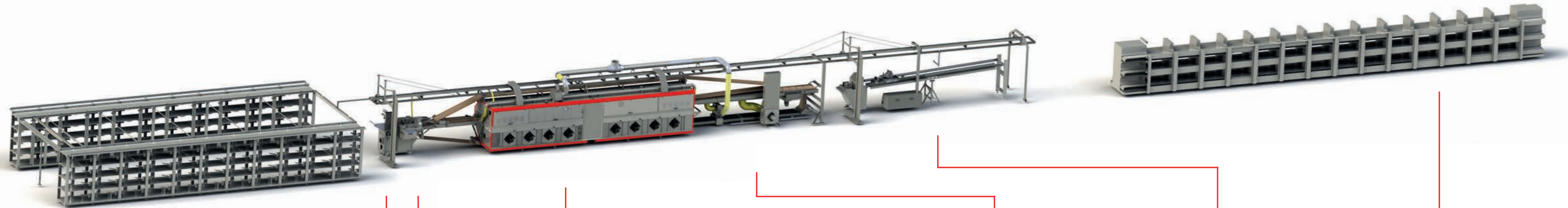
## HiPerSet 8.0+ - The benefits at a glance

The HiPerSet is our single-belt solution. A specific air guide system provides a constant thermal environment in the complete processing station. With the removal of obstructions to airflow, a high volume of climate circulation is achieved with relatively high compression allowing yarn to be heated quickly and thoroughly to the required heatset temperature. The HiPerSet offers easy maintenance and operation.

On the HiPerSet all kinds of yarn can be processed. Due to the modular system every customer can choose his ideal machine.

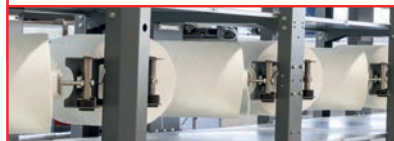
**HiPerSet 8.0+ - The strongest single channel model**  
Production up to 12 tons per day





### Creel

- Optimal ergonomic design and easy handling
- Flexible choice of distance between creel yarn packages according to size: ergonomic 400mm or larger 500mm
- Locking system for mandrels ensuring safe bobbin positioning
- Thread sensor with Quick Stop in the event a yarn end should break
- Anti- static design
- Variable set-up options
- Optional Extras:*
- Bobbin monitoring = Bobbin Monitoring Control (BMC)
- LED light tree indicates creel position status
- SpliceSet



### TRB

- Newly designed steam channel allows more efficient perfusion of yarn
- Directional side to side oscillator enables yarn deposit over the complete width of the conveyor belt
- If there is a hang, the yarn will be kept in the steam channel by means of a rake
- The yarn is deposited directly and flat from the TRB onto the conveyor belt. Therefore a yarn chute is not necessary
- For quality control, the temperature in the steam channel is monitored
- The servo driven synchronized running of all transport rollers results in an even frieze effect, particularly in the stop – start phase
- It is possible to adjust the rotations and the rotational speed of the false twist



### Coiler

- Air injector enables easy threading
- Coiler flyer with servo drive to synchronize coiler belts and yarn feed rollers with conveyor belt
- Possible to take up yarn onto winder without causing differences in tension, also in the start – stop operations
- Coiler pattern can be either a circle or a figure eight



### HiPerBox

- One channel system for equal heatsetting effect
- Computer-controlled dew point regulation (steam control)
- Range of temperature for heatsetting between 110-200 °C
- Strong energy saving design, steam consumption < 30kg/h
- Modular sizes



### Cooling System

- High performing cooling unit
- Monitoring unit of yarn temperature at yarn take-off
- Tension generators for equal yarn take-off
- Vacuum system for easy and defined yarn take-off



### Accumulator

- Quick and easy to thread
- Variable length of storage depending upon the modular design (3m, 6m, 9m).
- Yarn tension is achieved with the help of the tension generator resulting in improved yarn separation over rollers, eliminating sliding friction capable of creating "lean" or "stretched" yarn
- Hard-wearing carbide coating on the deflection rollers promotes optimal yarn transport
- Smooth and continuous contact pressure
- Sliding rails with special high-tech coating
- Pneumatic pressing lever improves yarn transport



### TakeUp Winder

- Quick threadup and doffing (down to 25 sec.)
- Yarn speed up to 750m/min
- Accurate bobbin build-up

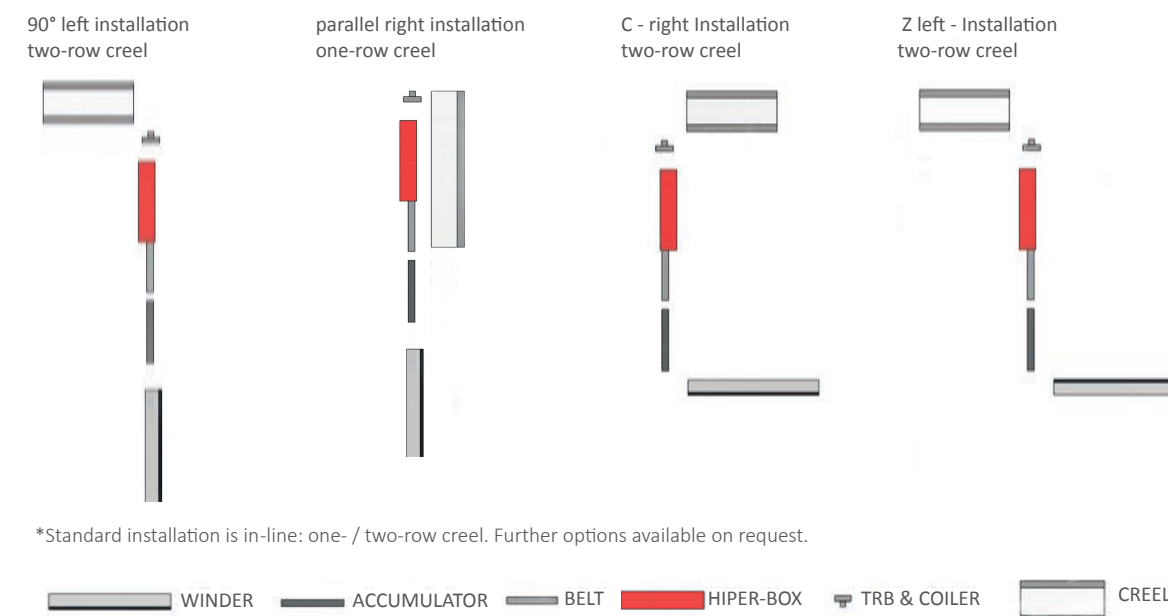




# Technical data

## Overview HiPerSet 8.0+

### Installation options\*



### Technical data\*

	HiPerSet 8.0+
Number of operators (average)	2
Maximum ends on creel	84
Maximum yarn speed overfeed	600
Straight and frieze yarn possible	✓
Maximum production (tons/day)	10- 12
Channels with yarn relaxing zone	1
Accumulator for optimizing machine efficiency	✓
TakeUp winder maximum yarn speed (m/min)	750 m/min
Maximum belt density (g/m length of belt)	650
Steam consumption (kg/h)	15- 40
Electricity consumption (KWh)	30-70
Air consumption (without TRB- transport air)	40 Nm <sup>3</sup> /h

\*All data without guarantee and excluding all liability. These are approximate values which can vary depending on conditions. Production data depending on dtex, twist, filaments, yarn quality, yarn speed, belt density, etc. The belts must not be loaded with more than the recommended quantity.



# Service

## Professional support

## Customer support

We love to support you!

We are not only your machine and spare part supplier, but we are also your best source for technical support and service. Excelling in customer service is of the utmost importance to us.

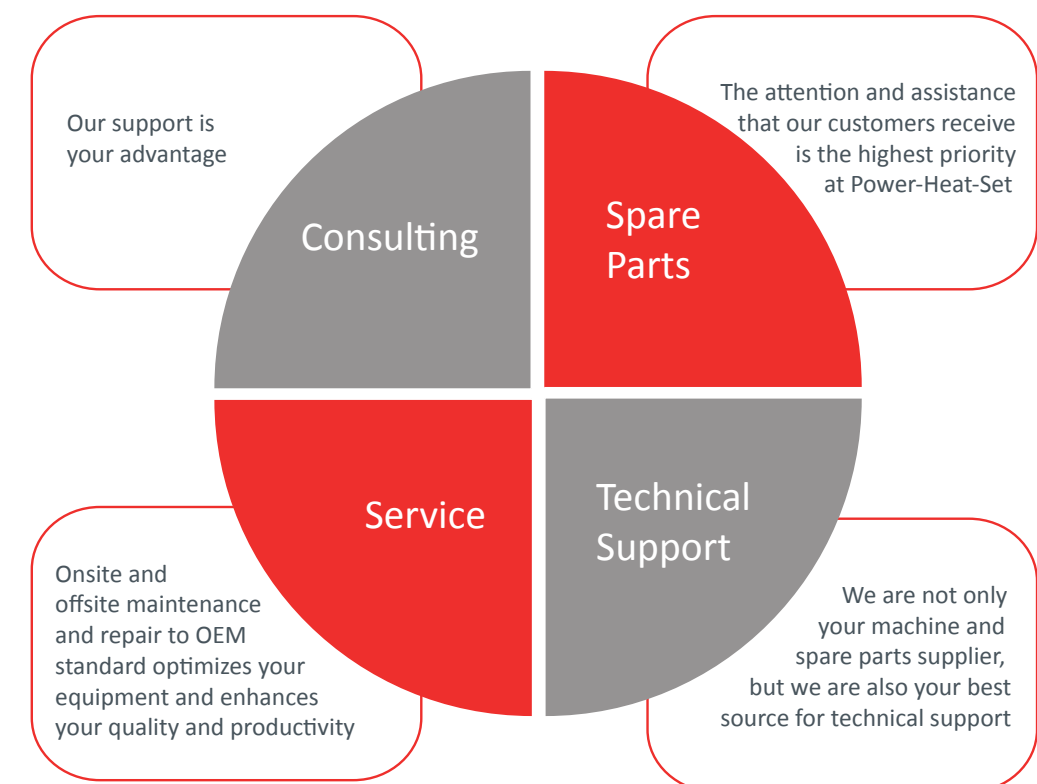
### Parts and technical support

Installation, commissioning, training for staff, maintenance, supply of spare parts, technical advice, .... We have the expertise and experience. For example, we provide a training and R&D center where we process material trials for customers or offer training for operators.

### Consulting in all matters

Consulting you on which of our products fits your needs, planning the machine layout, supporting you with financing models, .... Whatever you need, our worldwide operating team is happy to offer a comprehensive carefree package for our customers.

Let us know what we can do for you!







## ***power-heat-set*** GmbH

### **Power-Heat-Set GmbH**

Amperstrasse 4  
84513 Toeging am Inn  
GERMANY

Phone: +49 (0) 8631/393-480  
Fax: +49 (0) 8631/393-580  
E-Mail: [mail@power-heat-set.com](mailto:mail@power-heat-set.com)  
Internet: [www.power-heat-set.com](http://www.power-heat-set.com)



### **Power-Heat-Set of America, Inc.**

409 North Park Drive  
Suite D

Dalton, Georgia, 30720-2625

Phone: +1 (706) 5297199  
Fax: +1 (706) 5297351  
E-Mail: [mail@power-heat-set.com](mailto:mail@power-heat-set.com)  
Internet: [www.power-heat-set.com](http://www.power-heat-set.com)

